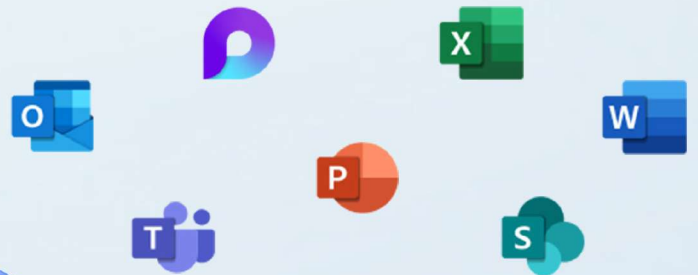


**Work smart**  
**Work secure**  
**Work fast**

# Work**Magic**

Windows 11 Pro devices and Microsoft 365<sup>1</sup>, a secure, AI-powered cloud solution. Learn how the perfect pair can help enhance productivity, improve security, and prepare you for the future.



# Table of contents

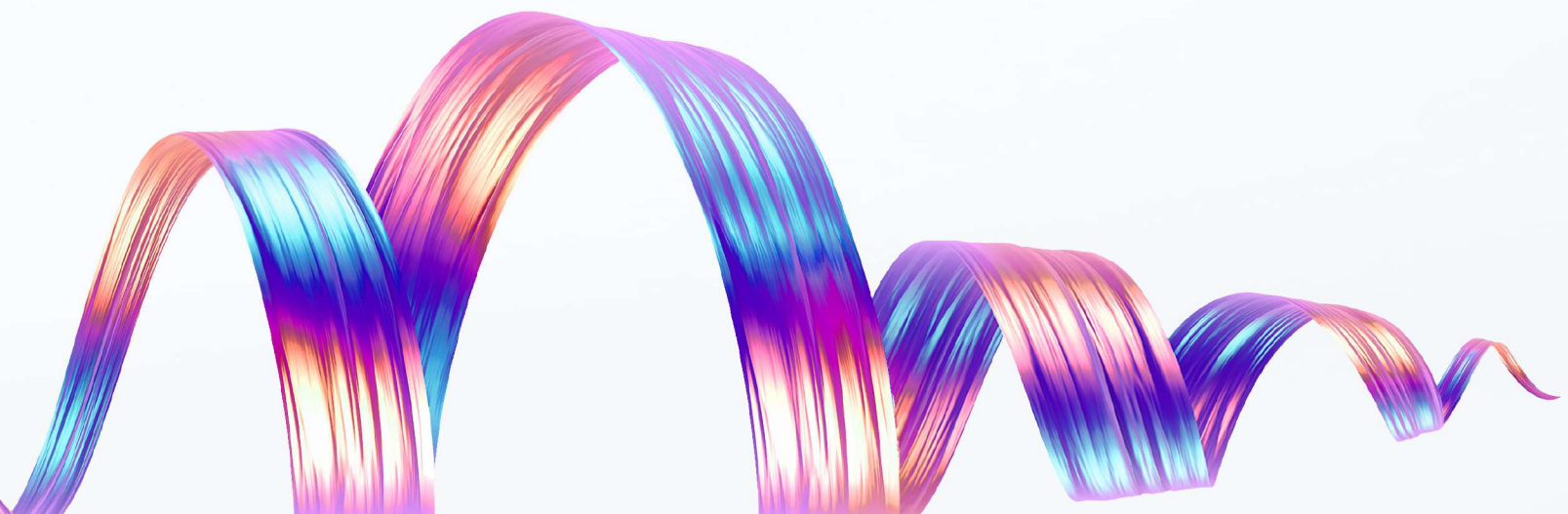
Introduction to the pace of modern work	01
Prepare for Windows 10 end of support	04
Why upgrade? Windows 11 Pro devices with Microsoft 365	05
Work smart: Empower your team	06
Work secure: Safeguard your business	12
Work fast: Streamline business operations	17
Office Home & Business 2024	21
Get started with the perfect pair	23
Endnotes	24

Est. read time: 20mins

# The pace of modern work and new technology demands a **new approach**

The pace of modern business and today's work requirements are driving businesses to prioritize technology investments that help them increase productivity and collaboration, reduce costs and complexities, and strengthen cybersecurity.

As work continues to change, employees are spending more time communicating in meetings, email, and chat. Security and data protection breaches continue to grow in strength and numbers. Businesses grow and remote work continues to thrive. Familiar as these trends may be, new technologies are emerging that can help business owners like you stay ahead of the curve and thrive in today's digital world. To stay competitive and secure, many businesses need to upgrade their software and hardware and deploy modern solutions that offer everything an organization needs to succeed.



# Employee productivity challenges

Businesses rely on teamwork and collaboration to achieve their goals, but many employees face daily challenges that impact their productivity levels, workflows, and their ability to manage tasks. Your employees may be facing challenges like searching for information across disparate sources, using incompatible apps for collaboration and communication, and summarizing meetings and sharing notes.

Based on a recent study of how employees work:



of people spend more than half their day communicating in meetings, chat, and emails and only 43% of their time creating<sup>2</sup>



of employees say they don't have enough uninterrupted focus time in the day<sup>2</sup>



say they face challenges managing work tasks, leading to a lowered ability for innovation and strategic thinking<sup>2</sup>



## Increase in security concerns

Some companies are working with limited IT resources, increasing concerns about the technical capabilities of solutions and their ability to integrate with existing systems. As a result, security and data protection breaches continue to be a threat to businesses of all sizes, and security updates are easily missed. For IT professionals and managers, this means more time spent focusing on cyberattacks and phishing scams, and less time supporting their employees and helping their business scale.

**3 in 4**

security decision-makers feel the move to hybrid work leaves their organization more vulnerable to security threats<sup>3</sup>

**87%**

of security decision-makers experienced at least one firmware attack between 2019-2021<sup>3</sup>

**921**

password attacks every second, nearly doubling over a 12-month period<sup>4</sup>

## Embracing business and IT management transformation

As organizations grow, IT infrastructure becomes more complex and difficult to manage. This can lead to downtime, lost productivity, and increased costs. Investing in advanced technology to empower your workforce to safely work from anywhere, on any device while still being cost-efficient might be something you're already considering—for many organizations like yours, it's a top priority.

**64%**

of small and medium businesses allow employees to access work data on personal phones and computers<sup>5</sup>

**60%**

of organizations have employees who work from home at least some of the time<sup>4</sup>





# Outdated PCs put your business at risk

Windows 10 support ends on October 14, 2025, meaning older devices will no longer receive security and feature updates. Preparing now will help keep your business secure and your employees productive. Upgrading your hardware allows you to take advantage of powerful devices and Microsoft solutions, and the benefits of the latest productivity and security enhancements.

Upgrading to Windows 11 Pro devices before Windows 10 end of support (EOS) can help your business stay secure and up-to-speed with devices that come with layers of security enabled by default and AI-enhanced efficiency. With the addition of a Microsoft 365 business license, you can run your business with the perfect pair<sup>1</sup> for a secure, AI-powered cloud solution that enhances productivity and innovation.

## Resources to prepare for your Windows 11 upgrade

### [Microsoft EOS Calculator](#)

This tool will help you determine if your current Windows 11 deployment trajectory will allow for completion by Windows 10 EOS (October 14, 2025) and what the benefits and costs of the upgrade timeline might be as well as how you can accelerate your plan to deploy Windows 11 before Windows 10 EOS.

### [Windows 11 Readiness Assessment](#)

This assessment will help you evaluate your Windows 11 deployment strategy and readiness ahead of the October 2025 EOS date. Upon completion, you'll receive an overall score to benchmark your progress, along with curated next steps and tailored recommendations, including links to additional documentation.

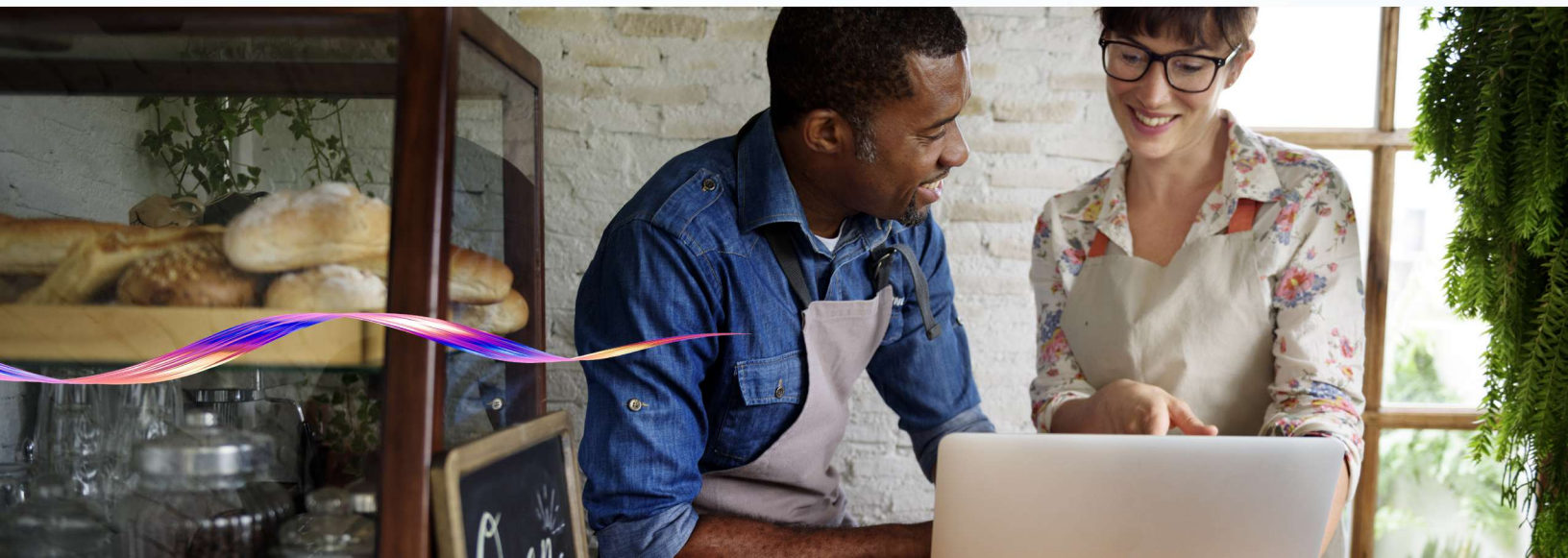
Work Magic  
Windows 11 Pro devices and Microsoft 365

# Work Magic with the perfect pair: Windows 11 Pro devices and Microsoft 365<sup>1</sup>

Run your business with Windows 11 Pro devices and Microsoft 365, the perfect pair for a secure, AI-powered cloud solution that enhances productivity and innovation. Together, Windows 11 Pro devices with Microsoft 365 business can help your employees streamline tasks, save time, and gain insights with AI assistance. You can seamlessly navigate across applications, data, and the cloud for more seamless workflows.

With Windows 11 Pro and Microsoft 365, you can:

- **Work secure:** Safeguard your business with advanced security and data protection before Windows 10 end of support (EOS).
- **Work smart:** Empower your team by supporting your growing business with AI-driven productivity and seamless collaboration.
- **Work fast:** Streamline operations and increase customer trust with automated controls and easy deployment.
- **Do even more** with Microsoft Copilot and Microsoft 365 to Copilot<sup>6</sup> to streamline tasks on your device and in your apps.



## Work smart

# Empower your team with AI-driven productivity and seamless collaboration

Windows 11 Pro devices and Microsoft 365<sup>1</sup> help empower your employees and simplify their workday, enabling them to impact business success. AI-powered tools within Windows 11 Pro devices and Microsoft 365 can help your employees enhance productivity, elevate efficiency, increase collaboration, streamline their workflows, and personalize their desktop experiences.





# Breakthrough productivity with the best Copilot experiences

Copilot is your AI assistant for work that helps supercharge productivity, amplify creativity, and save time so you can focus on what matters. With Microsoft 365 on Windows 11 Pro devices, you can get the best Copilot experiences in two distinct ways – on your device and in your apps.

Prompts in Copilot are what powers it forward. Using your own words, you can create custom illustrations and automatically enhance your photo editing on your Windows 11 Pro device. With Microsoft 365 Copilot, you can create presentations, organize documents, draft notes, and analyze data in your Microsoft 365 apps.

Microsoft Copilot on your device and Microsoft 365 Copilot<sup>6</sup> in your Office apps helps you get more done, faster.



## Microsoft Copilot

Copilot on Windows 11 Pro enhances your device experience with AI-powered tools. Operating from the cloud, it provides functionalities like chat and web search, empowering you to summarize, analyze, and create content on your Windows 11 Pro device. The AI-powered features of Copilot deliver answers quickly and allow for follow-up questions, plus the ability to generate images from your ideas. Copilot is always just a keystroke away. Additionally, when signed in with a work or school account (Microsoft Entra ID), Copilot ensures enterprise data protection.<sup>7</sup>

Microsoft Copilot includes AI features that can help your employees complete demanding workloads **42% faster on average**.<sup>8</sup>

## Prompts for Microsoft Copilot



"Blur the background of this photo and focus on the main subjects."



"Create a colorful logo with the company's name included."



"Help me create a vision and mission statement for the company's rebrand."





## Microsoft 365 Copilot

Integrated in the Office apps you use every day, Microsoft 365 Copilot is your AI assistant at work that boosts productivity and creativity, helping you unlock more value to run your business. It helps employees save time with their daily tasks and fosters seamless collaboration by unlocking insights from data and knowledge across your business apps and web activity. Available as an additional purchase with your Microsoft 365 business license, you can use Microsoft 365 Copilot in apps like Teams, Outlook, PowerPoint, Excel, Word, and more.

**70% of Copilot users** said they were more productive<sup>9</sup>

### Example prompts for Microsoft 365 Copilot



"What questions can I ask to prompt discussion?"



"Elevate my writing to match the tone of voice in this document

[insert reference doc]."



"Analyze the data in tables 1-5 in order of highest profit."



"Create a pitch deck based on the meeting notes from [insert notes doc]."



"Gather all emails about Project X and summarize the main points from each."



Advanced AI tools are changing how people work and collaborate, making major improvements to productivity levels. Windows 11 Pro devices and Microsoft 365 can help your employees achieve more with less time and effort.

Not only do the AI tools in Windows 11 Pro devices and Microsoft 365 keep your workforce productive, but they also keep them secure. Your chat and search data **aren't saved, accessed, or viewed by Microsoft, or used to train the AI model.** For users signed in with a Microsoft Entra ID account, Copilot offers enterprise data protection<sup>7</sup> and your IT access controls and policies apply to Copilot.

## Elevate efficiency

You can safely run your business from anywhere with a secure, comprehensive, AI-powered cloud solution that makes hybrid work, work. Microsoft 365 and Windows 11 Pro devices are equipped with productivity tools that save your employees time.



### **Speed up everyday tasks like drafting new content, summarizing documents, and analyzing complex data.**

AI assistance from Microsoft 365 Copilot<sup>6</sup> and Microsoft Copilot on Windows 11 Pro devices saves your employees time so they can focus on their best work. Copilot on your device enables users to summarize, analyze, and create content across apps and online. Microsoft 365 Copilot is integrated into the Office apps you use every day like Teams, Outlook, PowerPoint, and Word, combining the power of your business data and the web with secure AI<sup>7</sup>.



### **Simplify your workday with Microsoft 365 and improve productivity on your Windows 11 device.**

Productivity has been **improved by a reported 15%** with AI-powered experiences, intelligent workflows, and unmatched personalization on Windows 11 Pro devices.<sup>9</sup> Microsoft 365 helps you stay current with always-up-to-date versions of the desktop and web apps you rely on every day—plus cloud storage with OneDrive and SharePoint, allowing users to access and share files from anywhere.



### **Help employees achieve more with less time and effort.**

Using Copilot for AI assistance on Windows 11 devices, you can complete demanding workloads **42% faster on average**.<sup>8</sup> Microsoft 365 includes AI-powered capabilities to help analyze figures faster and more naturally, schedule meetings, and prepare for presentations more effectively.

## Streamline workflows

Employees are unhappy with the current state of how they work, with 68% saying they don't have enough uninterrupted focus time in the day<sup>2</sup>. Windows 11 Pro devices and Microsoft 365 can improve the employee experience, helping your employees stay in the flow of work with faster day-to-day experiences.



### **Give employees the ability to experience faster workflows and collaboration.**

Experience **50% faster workflows** and collaboration on Windows 11 Pro devices with paired, easy to use solutions across applications, data, and the cloud.<sup>8</sup>



### **Employees can stay in the flow anywhere with meetings and features to get organized in a snap.**

Windows 11 Pro devices come with seamless redocking that helps keep employees in the flow of their work. Windows remembers the positions of open apps on external displays, so when you re-dock, any open windows that were previously on that display return automatically. Microsoft 365 simplifies the day-to-day experiences with the ability to create and collaborate anywhere. Cloud-based features in Office applications allow employees to stay in the flow with more productive Teams meetings and shared documents created in app or online for real-time collaboration.



### **Build systems based on shared knowledge and efficient workflows.**

Streamline knowledge sharing with a centralized intranet & knowledge base with SharePoint and easily collaborate on documents and presentations with OneDrive in Microsoft 365 Business.



## Work smart Empower your team

“

With over 32,000 devices in our organization running Windows 11 Pro, we are able to enhance security and maximize productivity with usability features that support a sustained approach to hybrid working.

”

*-Paul McKenna, Head of Digital Workplace & Contact Centre  
Platforms Westpac, Australia.*

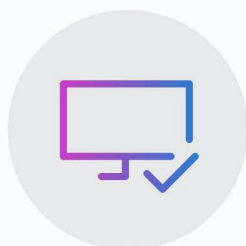
## Personalized experiences

With new capabilities on Windows 11 Pro devices, you can tailor your PC to your workstyle and work the way you want.



### **Enable the ability for employees to personalize their work experience.**

Employees can personalize their work experiences based on individual workstyles across applications, data, and the cloud. Track your ideas on the web with collections on Microsoft Edge, use voice typing, create widgets, or use a digital pen to brainstorm.



### **Personalize your Windows 11 Pro set-up.**

With Microsoft Copilot on Windows 11 Pro devices, you can personalize your entire set-up including monitors, accessories, applications, and desktop settings. Broad accessory support across all Windows 11 Pro devices provides flexibility for you to mix and match the accessories you need to create great work. If you have a touchscreen, you can easily switch between pen, ink, touch, and voice.

## Work secure

# Safeguard your business with advanced security and data protection

Backed by Microsoft's advanced security solutions and commitment to investing in secure technology, Windows 11 Pro devices and Microsoft 365<sup>1</sup> can help protect your apps, identities, data, and devices. Outdated PCs put your business at risk, so updating your hardware and software is vital.

With Windows 10 EOS approaching in October 2025, upgrading to Windows 11 Pro devices can keep your business, data, and employees secure with out-of-the-box protection and built-in security features. When you add Microsoft 365, and Microsoft Entra ID<sup>1</sup>, you have an additional layer of protection for control over the devices that connect to your business's resources with access controls and identity management.

“

I would recommend Windows 11 Pro to any business for its improved security features and ease of use. It's a no-brainer way to keep our business devices secure, and it was such an easy transition.

”

*-Neal Freeman Chief Digital & Technology Officer,  
The Broadway League, USA*



# Automated security updates



**Powerful security tools help ensure you are protected with security updates beyond October 2025.**

To continue receiving end-to-end security management on your devices, upgrading to Windows 11 Pro devices provides built-in, automated security tools with enhancements such as biometric sign-in with:



Windows Hello



BitLocker



Windows Defender  
Antivirus



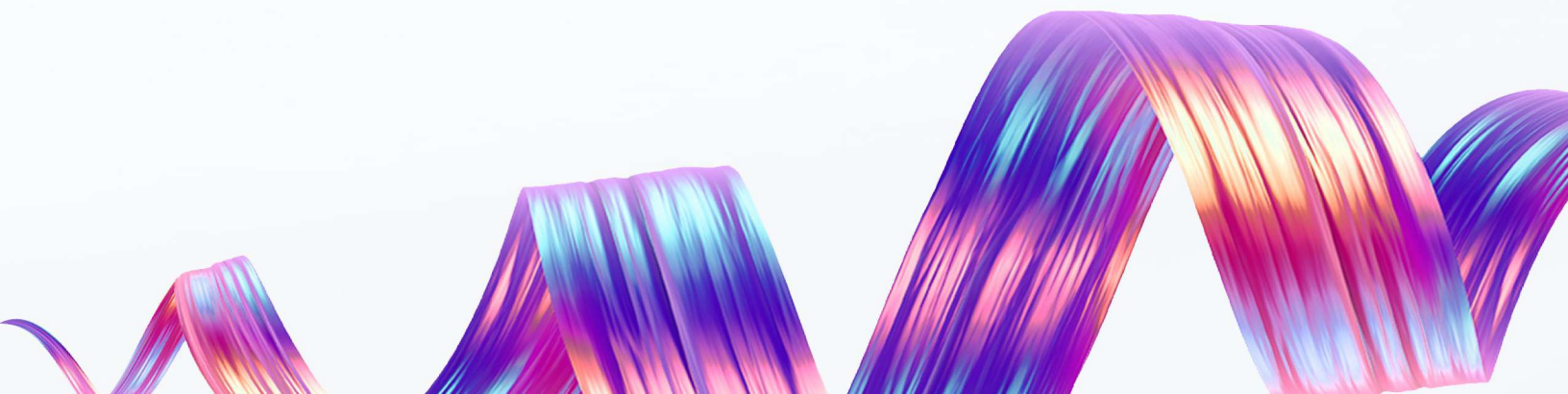
**IT professionals can spend less time on helpdesk tickets and troubleshooting issues.**

Devices are protected with automatic monthly updates with advanced security improvements, smaller download sizes for security and user experience updates<sup>1</sup>, and tools for faster installation.



**Microsoft 365 brings added protection to your Office apps.**

With Microsoft 365, you get the latest updates in Microsoft 365 app security, and advances in Microsoft 365 Copilot<sup>1</sup>, delivered straight to your desktop app. By default, updates for Microsoft 365 apps are downloaded automatically from the internet and applied in the background, without any user or administrator intervention.



# Out-of-the-box protection



## Deploy modern security management and commercial data protection.

Windows is secure by design and secure by default to protect valuable business and personal information from chip to cloud with powerful hardware-backed security, enhanced privacy settings, and granular IT controls.



drop in security  
incidents with Windows  
11 Pro devices<sup>9</sup>



## Microsoft Copilot offers enterprise data protection.

Microsoft Copilot operates as your everyday AI companion, available on all Windows 11 Pro devices that includes a new, simplified, user interface designed for work and education. With enterprise data protection<sup>7</sup>, your IT access controls and policies apply to Copilot.





Work secure  
Safeguard your business

## Defend against evolving cyberthreats



### Reduce the risk of costly damage through AI-powered threat intelligence.

With the latest safeguards in Windows for better peace of mind, Windows 11 Pro devices can help you experience **2.8X fewer instances of identity theft**.<sup>9</sup> Windows Defender SmartScreen deploys proactive protection against credential theft and Windows Hello enables easy, secure sign-on without a password for business users on Windows 11 Pro devices.



### Get alerted to suspicious activity in Microsoft 365 apps.

OneDrive's built-in ransomware detection feature alerts you when it detects suspicious activity, such as mass deletions or encryption of your files. You can then restore your files to a previous point in time before an attack.



### Share files securely with OneDrive.

Microsoft 365 provides security and generous storage that makes collaborating easy. OneDrive is a cloud-based storage service that helps you save, share and access documents, media, and other files, securely, with people inside and outside of your organization.



### Microsoft 365 offers built-in cyber security with advanced features.

Microsoft Defender for Business<sup>12</sup> provides enterprise grade endpoint protection to help protect against, defend, and respond to cyber-attacks and guard against email viruses, spam, and phishing attacks. In a recent study, Microsoft 365 Defender demonstrated **100% visibility and complete coverage across all stages of the attack**.<sup>13</sup>

# Safeguard business data and privacy



## Protect valuable data and control apps and access to information.

Windows 11 Pro is a streamlined, chip-to-cloud security solution that can provide **3.1x reduction in reported firmware attacks** in Windows.<sup>9</sup> Protect access to your system resources by using Intune Endpoint Privilege Management (EPM).<sup>14</sup>



## Gain granular control to enforce security policies across all endpoints.

You can further reduce risks by upgrading to Windows 11 Pro before Windows 10 EOS in October 2025. Security features included on your Windows 11 Pro devices like Mobile Application Management (MAM) enable your employees to securely access organizational content through Microsoft Edge on personal devices. Plus, you can automate local admin password account management and improve security with local administrator password solution (LAPS) through Microsoft Entra ID.<sup>15</sup>



## Maintain control over devices connected to your business resources.

With the added security of Microsoft 365 on your Windows 11 Pro device, you can control access to files with device policies & document management through SharePoint. Additionally, you can secure Microsoft 365 content on employee devices like OneDrive documents, email and calendars with device configuration, and security policies and access rules with Basic Mobility & Security.

You can also apply security policies to help protect business data on all your devices with Intune<sup>1</sup> and secure your environment with identity and access management with Entra ID.<sup>8</sup>



# Work fast

## Streamline business operations with easy adoption and automation

Together, Windows 11 Pro devices and Microsoft 365<sup>1</sup> can reduce the strain on IT support with automated security updates and a reported 62% fewer security incidents<sup>8</sup>. They can also simplify data security with enterprise grade protection and automatic updates across devices and apps.

As Windows 10 end of support approaches in October 2025, planning now can save you time and money in the long run. Windows 11 Pro devices are equipped with the latest advancements in AI, security, and business management that aren't available in Windows 10. Paired with Microsoft 365, upgrading to Windows 11 Pro devices will help you stay more secure and work faster and smarter.



## Experience easy adoption



### **Windows 11 Pro PCs are designed for rapid adoption and compatibility.**

Built on the Windows you know and trust, you can easily integrate new PCs with your existing technology including apps, displays, and accessories. The **FastTrack App Assure program** helps you review your app compatibility as you upgrade to Windows 11 at no additional cost. The **Windows Insider Program for Business** has features to help you run **Windows Insider Preview Builds** within your organization. Explore the latest features, validate your apps and infrastructure, and deploy faster as a Windows Insider.

**99.7% of business applications**, printers, and other hardware are compatible with Windows 11 Pro.<sup>16</sup>



### **Accelerate deployment and improve employee onboarding with zero-touch provisioning.**

Windows Autopilot accelerates deployment with zero-touch provisioning using Microsoft Entra ID and Microsoft Intune.<sup>10</sup> Windows 11 Pro devices also have faster, more seamless updates with Windows Update for Business. You can save time and money with a reported **25% faster deployment**.<sup>16</sup>



# Automate processes



## Get employees up and running quickly.

With easy remote onboarding, and automated updates and deployment, Windows 11 Pro can improve employee satisfaction and save your IT team's time.

**21% reduced IT staff time spent on deployment.<sup>17</sup>**



## Automate processes across functions in your business.

Microsoft 365 Copilot automates business process across your business functions like sales, service, and finance teams, enabling you to get more out of your existing resources and help increase revenue. You can tailor Copilot for the specific needs of your business using Microsoft Copilot Studio (included with Microsoft 365 Copilot), so you can customize and extend your business processes. Copilot Studio is an end-to-end conversational AI platform that empowers you to create agents using natural language or a graphical interface.



# Increase IT productivity and lower operational costs

**25% productivity improvement** across IT and security teams due to a streamlined, chip-to-cloud security solution based on Windows 11 Pro.<sup>16</sup>



## Reduce costs and time saved on mitigation of security threats with Windows 11 Pro devices.

Experience **250% ROI** with Windows 11 Pro devices due to factors like improved productivity, tighter security, faster deployment, and fewer helpdesk tickets.<sup>16</sup> In addition, Microsoft Copilot offers simple self-help features that get your employees up and running quickly with faster deployment and troubleshooting support.



## Flexible and scalable licensing options.

Windows 11 Pro devices with Microsoft 365 is a scalable and flexible solution that can adapt to your changing business needs and preferences and offer various plans and options to suit your budget and requirements. This includes per-user licensing options for Windows 11 Pro that can reduce upfront costs when upgrading devices. Microsoft 365 offers subscription-based cloud services that include regular updates with the latest capabilities and security patches, and more flexible billing options (monthly or annually) to suit cash flow needs.



## Reduce help desk strain with automated security updates.

Reduce costs with a reported **80% reduction in helpdesk calls**<sup>16</sup> and time saved on mitigation of security threats with Windows 11 devices.

“

Windows 11 Pro makes IT easily manageable, so we can focus on our core business. Deployment was effortless, as were maintenance, policy enforcement, quick patch availability, and distribution.

*-Marcel Martini Managing Director, SUSI&James, Germany*

”

# Move your business forward with Office Home & Business 2024

Looking for a one-time purchase to jumpstart productivity and collaboration initiatives?

Get Office Home & Business 2024 to enhance your Windows 11 Pro devices and enjoy familiar apps with advanced performance to move your business forward. It provides a balance of simplicity and performance, the convenience of a one-time purchase that eliminates the need to track and manage subscriptions.

With the one-time purchase of Office with your device refresh, you can access the powerful applications your business requires.



## Better performance for your business

Experience improved speed, a more seamless experience, and enhanced search functionality to keep your business running smoothly.

- Whether it's emails, files, people, or events, get the best matches for what you're looking for with new search improvements in Outlook.
- Experience faster performance and fewer freezes when working in Excel, even if you have multiple workbooks open at the same time.
- Use the check performance feature to find and remove cells containing hidden information that can slow down your Excel workbook.

## Analyze like a pro and take your data to new levels

Create dynamic charts to aggregate data more easily, get improved analysis functions, and use accessibility enhancements to ensure that your business is available to more people.

- Easily paste pictures directly or use the IMAGE function to add images in Excel without changing the formatting.
- Access new functions in Excel to help you more easily use text and arrays in worksheets.
- Visualize different datasets with dynamic arrays in charts that will automatically update to capture all data when the array recalculates.
- Use the LAMBDA function in Excel to create a function for commonly used formulas and eliminate the need to copy and paste.



### Create content that stands out

Level up your presentations and emails with engaging new features and accessibility enhancements. Plus, keep your business going with apps directly installed on your computer.

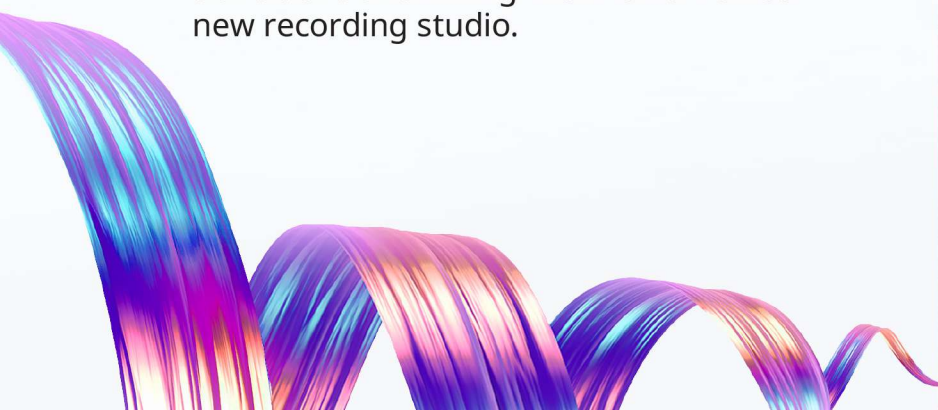
Find all the tools you need to create accessible content in one place using the accessibility ribbons in Word, Excel, and Outlook.

### Outlook

- Update a meeting series for future dates without changing the history of previous meetings.
- Schedule a future time for your email to be delivered in Outlook.
- Take control of your communication with the undo send command to cancel a scheduled email message before it's sent.
- Focus on your most important emails with the focused tab in Outlook while the rest remain easily accessible—but out of the way—on the other tab.

### PowerPoint

- Seamlessly embed a live camera feed directly into your slides with cameo in PowerPoint.
- Include closed captions on embedded video and audio objects on PowerPoint slides to make your presentations more accessible.
- Easily record your narration, animations, transitions and inking with PowerPoint's new recording studio.





# Your business. **Your Magic.**

Plan ahead and start the switch now to take advantage of the latest productivity and security enhancements to stay ahead of the curve and achieve your business goals.

As Windows 10 end of support approaches, you can control and plan for a full refresh of devices and upgrade to Windows 11 Pro with Microsoft 365<sup>1</sup>. Gone are the days of siloed working, fragmented solutions, and dissatisfied employees. As a reminder, these tools are a great resource to get started with your upgrade to Windows 11 Pro.

[Microsoft EOS Calculator](#)

[Windows 11 Readiness Assessment](#)

[Placeholder text for CTA and contact info]

Contact us to purchase today

[Your name]

[Contact information]

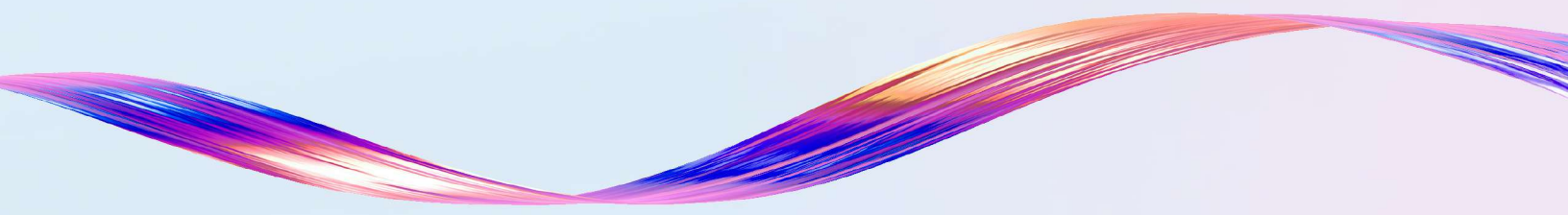
Work **secure**, work **smart**, work **fast**. Together, the power of Windows 11 Pro and Microsoft 365 will help you and your business truly Work Magic. Don't delay—reach out to learn how you can start the upgrade today.

“

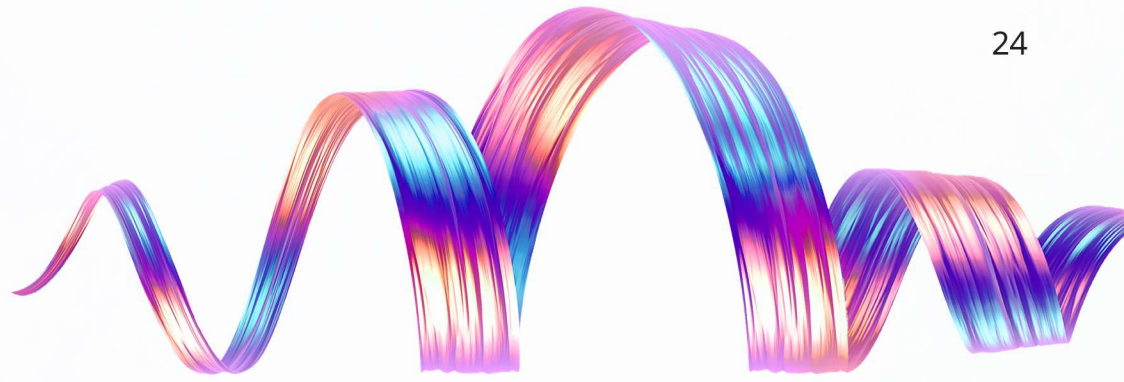
I would highly recommend Windows 11 Pro to other businesses as it offers advanced features, improved productivity, enhanced security, and easy compatibility with all types of applications. These features make it an ideal operating system for businesses of all sizes and industries.

”

*-Damien Ponweera Director of Finance, Techspace, UK*



# Endnotes



1. Sold separately
2. Work Trend Index Annual Report, [Will AI Fix Work?](#), May 2023
3. Security Signals Boost SDM Research Learnings. Microsoft, September 2021
4. According to Microsoft Azure Active Directory (Azure AD) authentication log data. 2022
5. Microsoft internal research of SMBs (2-299 employees)
6. Customers must have a qualifying Microsoft 365 plan for enterprise or business to purchase.
7. Requires eligible Microsoft 365 license. For users signed in with a Microsoft Entra account, Copilot offers enterprise data protection when logged into your work account (Microsoft Entra ID).
8. Compared to Windows 10 devices. [Improve your day-to-day experience with Windows 11 Pro laptops](#), Principled Technologies, February 2023
9. Work Trend Index Special Report, [What Can Copilot's Earliest Users Teach Us About Generative AI at Work?](#), November 2023
10. Windows 11 Survey Report, Techaisle, February 2022. Windows 11 results are in comparison with Windows 10 devices.
11. Ready, Jonathon. [How Microsoft reduced Windows 11 update size by 40%](#), Oct. 2021
12. Available as part of Microsoft 365 Business Premium.
13. Ganacharya, Tanmay. [Microsoft 365 Defender demonstrates 100 percent protection coverage in the 2023 MITRE Engenuity ATT&CK® Evaluations: Enterprise](#), September 2023
14. Developer enablement required
15. Requires Microsoft Entra ID and Microsoft Intune or other modern device management solution product required; sold separately
16. Commissioned study delivered by Forrester Consulting "[The Total Economic Impact™ of Windows 11 Pro Devices](#)", December 2022. Note, quantified benefits reflect results over three years combined into a single composite organization that generates \$1 billion in annual revenue, has 2,000 employees, refreshes hardware on a four-year cycle, and migrates the entirety of its workforce to Windows 11 devices.
17. IDC White Paper, commissioned by Microsoft, [Evaluating the Business Case of Microsoft Surface](#), doc #US49453722, September 2022